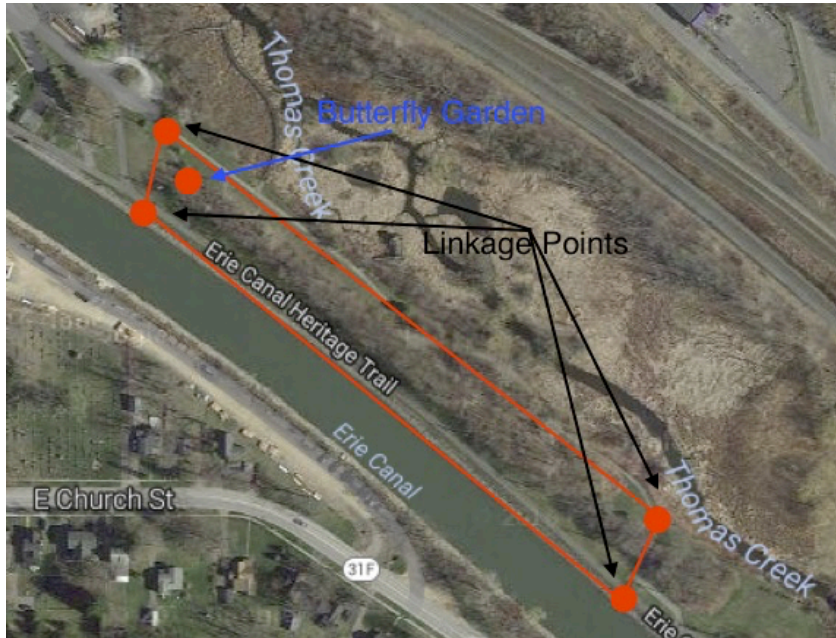


PURPOSE. The Fairport Industrial Development Agency, working with the Fairport Public Arts Committee, is commissioning public art installations for the Thomas Creek Wetland Walk Improvement Project. The Fairport Industrial Development Agency is seeking an artist or artist team to design and fabricate artistic directional signage and a sculptural garden ornament. Artists and artist teams are encouraged to submit on one or both project components.



ABOUT THE THOMAS CREEK WETLAND WALK IMPROVEMENT PROJECT. The Fairport Industrial Development Agency received funding from the New York State Canal Corporation to improve the pedestrian connection between the Thomas Creek Wetland Walk and the Erie Canalway Trail in the Village of Fairport. The project also includes the construction of a butterfly garden along one of the pathways connecting the wetland walk to the canal.

SCOPE. The project site is located approx. ½ mile east of the village center, at the end of Liftbridge Lane East. Artistic directional signs are envisioned at four linkage points between the Erie Canalway Trail and the Thomas Creek Wetland Walk. The sculptural garden ornament is envisioned as a permanent art installation to compliment the future butterfly garden.

DESIGN. Two of the four artistic directional signs, located on the Erie Canalway Trail, must be wetland-themed and spark visitors' interest to explore the wetland walk and highlight what they might encounter there, such as vegetation or habitat. The two remaining artistic directional signs, located on the Thomas Creek Wetland Walk, must relate to the Erie Canal and direct people to access and explore the Canalway Trail. The sculptural garden ornament for the butterfly garden may include a sitting opportunity for visitors and/or ornamental installations throughout the garden.

The design must compliment, but not dominate, the site. The theme and appearance must be consistent with the surrounding environment. The commissioned work must function well as directional signage or garden ornament, and be reasonably maintainable for twenty years. The artwork shall be durable, sturdy, stable and suitable for the climatic conditions and safe for public interaction.

MAINTENANCE. All public art will eventually need some form of maintenance and conservation. Therefore, it is important to have a clear understanding of each artwork's maintenance and conservation requirements, and any special qualifications required for those who will carry out the work. The commissioned artist(s) will be required to submit a standardized artwork maintenance worksheet at the completion of the project. The maintenance worksheet should include a listing of all materials used, fabrication techniques, paint colors, and any other information that would be useful to someone making repairs. The worksheet should also include a maintenance schedule that includes cleaning techniques and any special qualifications of required of maintenance personnel.



CALL FOR ARTISTS: RFQ
Erie Canal Trail/Thomas Creek Wetland
Artistic Directional Signage and Garden Sculpture
Submission Deadline: October 28, 2016

Industrial Development Agency
Monika Salvage
31 South Main Street
Fairport, New York 14450
585.421.3231
fairportoced.org

SPECIFICATIONS. The directional signs must be a minimum of 7 feet above the trail surface grade with a 3-foot offset from the edge of the trail; the sculptural garden ornament must be below 7 feet in height and fabricated to industry standards. If the artwork requires a concrete base, a standard concrete footing and anchor bolts will be provided. Site preparation and installation is the responsibility of the Fairport Industrial Development Agency. Depending on the size of the art installations, the artist or artist team may be required to have their drawings stamped by a professional engineer licensed in New York State.

BUDGET. The budget for the artistic directional signage is \$10,000, inclusive of all design, fabrication, delivery, insurance and other project-related costs. The budget for the sculptural garden ornament is \$3,000, inclusive of all design, fabrication, delivery, insurance and all project-related costs. Funding for this project comes from the Fairport Industrial Development Agency and the NYS Canal Corporation. There will be no additional funds available beyond the \$13,000. Artists are responsible for staying within the budget. The schedule of payments will be negotiated with the selected artist(s) in a contract agreement.

ELIGIBILITY. This call is open to all professional artists, preferably of Upstate New York, who have a record of successfully realizing projects of a similar scale in the public realm. Applications by employees or members of the Industrial Development Agency, Fairport Public Arts Commission, Village of Fairport or their relatives will not be considered.

SELECTION CRITERIA. The ability of the artist/artist team to perform the work proposed. The past experience of the artist in completing a successful public art project as evidenced in the resume and photo submittals. The artist's/artist team's ability to successfully integrate the guidelines for this project. The appropriateness of proposed work as it relates to the site. The durability of artwork and low maintenance over a 20-year period.

SELECTION PROCESS. After initial entries are received, a jury will meet and select up to three finalist(s) for each or both project components. Finalists who are invited to submit a written project proposal (including illustrations) of their proposed artwork will receive a stipend of \$100 each. After the written project proposals are received, the jury will meet again and select an artist/artist team for each or both project components. The jury will be comprised of seven to nine members and will include members from the Fairport Public Arts Commission and the Fairport Industrial Development Agency. Final design and concept approval is subject to NYS Canal Corporation review and approval.

Depending on the project and schedule, the Fairport Industrial Development Agency will be available to assist the artist in making connections to information, resources within, and various segments of the local community and to support the artist in his or her engagement with the project goals, site and context. The Fairport Industrial Development Agency reserves the right not to select any artists for this commission.

KEY DATES. (Dates are subject to change)

October 3, 2016	Call for Artists
October 21, 2016	Deadline for Written Questions
October 28, 2016	Deadline for Submission of Initial Entries
November 18, 2016	Notification of Finalist(s)
December 16, 2016	Deadline for Submission of Written Project Proposals (including illustrations)
January 20, 2017	Notification of Selected Artist(s)
January 27, 2017	NYS Canal Corporation Review
May 2017	Artwork and Installation Expected to be Completed



CALL FOR ARTISTS: RFQ
Erie Canal Trail/Thomas Creek Wetland
Artistic Directional Signage and Garden Sculpture
Submission Deadline: October 28, 2016

Industrial Development Agency
Monika Salvage
31 South Main Street
Fairport, New York 14450
585.421.3231
fairportoced.org

SUBMITTAL REQUIREMENTS.

INITIAL ENTRY:

Entrants must MAIL or DELIVER the following items (1 through 6) to:

Fairport Industrial Development Agency
ATTN: Monika Salvage
31 South Main Street
Fairport, New York 14450

Or E-MAIL the following items (1 through 5) to: monika@fairportny.com

1. Application Cover Sheet (see attached)
2. Artistic or Professional Resume (for artist teams, each member must submit)
3. Letter of Interest: Please explain your interest in this project and why you are qualified to complete this scope of work (not to exceed 1 page).
4. Additional visual support material and/or illustrations of past work (maximum 3 images, digital images or 8" x 10" color prints)
5. List three references, including names and contact information
6. Self-addressed, postage paid envelope sufficient to return all submissions if return is requested.

FINALISTS ONLY:

Notified finalists are required to submit the following items:

7. Written Project Proposal (2 pages maximum) detailing the following:
 - a. Project plan
 - b. Supporting illustrations
 - c. Introduction of theme
 - d. Proposed timeline
 - e. Proposed project material list and cost estimate

APPLICATION DEADLINE. Initial entry materials must be received no later than 4:00 pm on Friday, October 28, 2016 at the above mailing or e-mail address.

CONTACT INFORMATION. Questions must be submitted to Monika Salvage by e-mail at monika@fairportny.com no later than 4:00 pm on October 21, 2016. Responses to all questions will be posted as received to the project webpage at www.fairportoced.org.

APPLICATION COVER SHEET

Last Name _____ First Name _____

Street Address _____

City _____ State _____ Zip _____

Primary Contact Number (_____) _____

Secondary Contact Number (_____) _____

Email Address _____

APPLICATION CHECKLIST

Please use the list below to ensure you have included all requirements in your submission. Please also submit the info in the following order:

- Application Cover Sheet
- Artistic or Professional Resume (for artist teams, each member must submit)
- Letter of Interest: Please explain your interest in this project and why you are qualified to complete this scope of work (not to exceed 1 page).
- Additional visual support material and/or illustrations of past work, (maximum 3 images, digital images or 8" x 10" color prints)
- List three references, including names and contact information

I, _____, certify that my submitted application is complete and complies with the terms and conditions outlined in the Call for Artists. I warrant that all designs, sketches, and other materials are my original work product and that said materials do not infringe on the intellectual property rights of another individual or entity. Furthermore, I acknowledge that Fairport Industrial Development Agency is not responsible for delivery errors associated with the mail or email.

Signature